



ELECTRONIC COPY

LABORATORY GROWN DIAMOND REPORT

July 18, 2022
 IGI Report Number **LG538274358**
 Description **LABORATORY GROWN
DIAMOND**
 Shape and Cutting Style **CUSHION BRILLIANT**
 Measurements **9.89 X 8.08 X 5.51 MM**

GRADING RESULTS

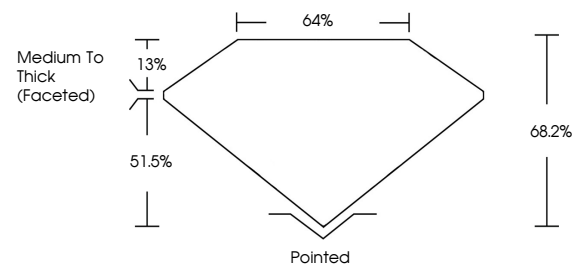
Carat Weight **3.26 CARATS**
 Color Grade **E**
 Clarity Grade **SI 2**

ADDITIONAL GRADING INFORMATION

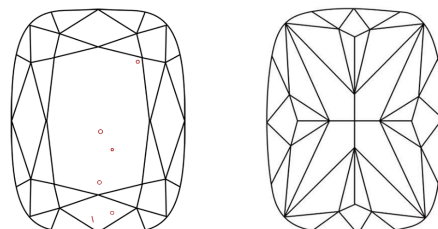
Polish **EXCELLENT**
 Symmetry **EXCELLENT**
 Fluorescence **NONE**
 Inscription(s) **LABGROWN IGI LG538274358**
 Comments: This Laboratory Grown Diamond was created by Chemical Vapor Deposition (CVD) growth process and may include post-growth treatment. Type IIa

LG538274358

PROPORTIONS



CLARITY CHARACTERISTICS



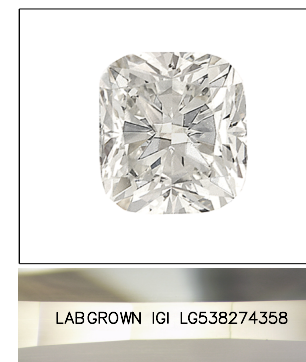
KEY TO SYMBOLS

Red symbols indicate internal characteristics.
 Green symbols indicate external characteristics.

**LABORATORY GROWN
DIAMOND REPORT**

GRADING SCALES

COLOR GRADING SCALE	CL	NC	FT	VLT	LT	
	COLORLESS D-F	NEAR COLORLESS G-J	FAINT K-M	VERY LIGHT N-R	LIGHT S-Z	
CLARITY (10x) GRADING SCALE	FL	IF	VVS	VS	SI	I
	FLAWLESS INTERNALLY FLAWLESS	VERY VERY SLIGHTLY INCLUDED	VERY SLIGHTLY INCLUDED	SLIGHTLY INCLUDED	INCLUDED	

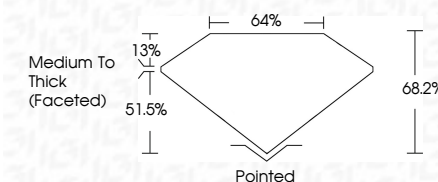


LASERSCRIBESM

Sample Image Used

LABORATORY GROWN DIAMOND REPORT

July 18, 2022
 IGI Report Number **LG538274358**
 Description **LABORATORY GROWN
DIAMOND**
 Shape and Cutting Style **CUSHION BRILLIANT**
 Measurements **9.89 X 8.08 X 5.51 MM**
GRADING RESULTS
 Carat Weight **3.26 CARATS**
 Color Grade **E**
 Clarity Grade **SI 2**



ADDITIONAL GRADING INFORMATION

Polish **EXCELLENT**
 Symmetry **EXCELLENT**
 Fluorescence **NONE**
 Inscription(s) **LABGROWN IGI LG538274358**
 Comments: This Laboratory Grown Diamond was created by Chemical Vapor Deposition (CVD) growth process and may include post-growth treatment. Type IIa



IGI

July 18, 2022	IGI Report No LG538274358	3.26 CARATS	E	SI 2	Pointed	EXCELLENT	EXCELLENT	NONE	LABGROWN IGI LG538274358	The Laboratory Grown Diamond was created by Chemical Vapor Deposition (CVD) growth process and may include post-growth treatment. Type IIa
CUSHION BRILLIANT	9.89 X 8.08 X 5.51 MM	Carat Weight	Color Grade	Clarity Grade	Cutter	Polish	Symmetry	Fluorescence	Inscription(s)	
		3.26 CARATS	E	SI 2	Pointed	EXCELLENT	EXCELLENT	NONE	LABGROWN IGI LG538274358	
				68.2%	64%	Medium To Thick (Faceted)				

